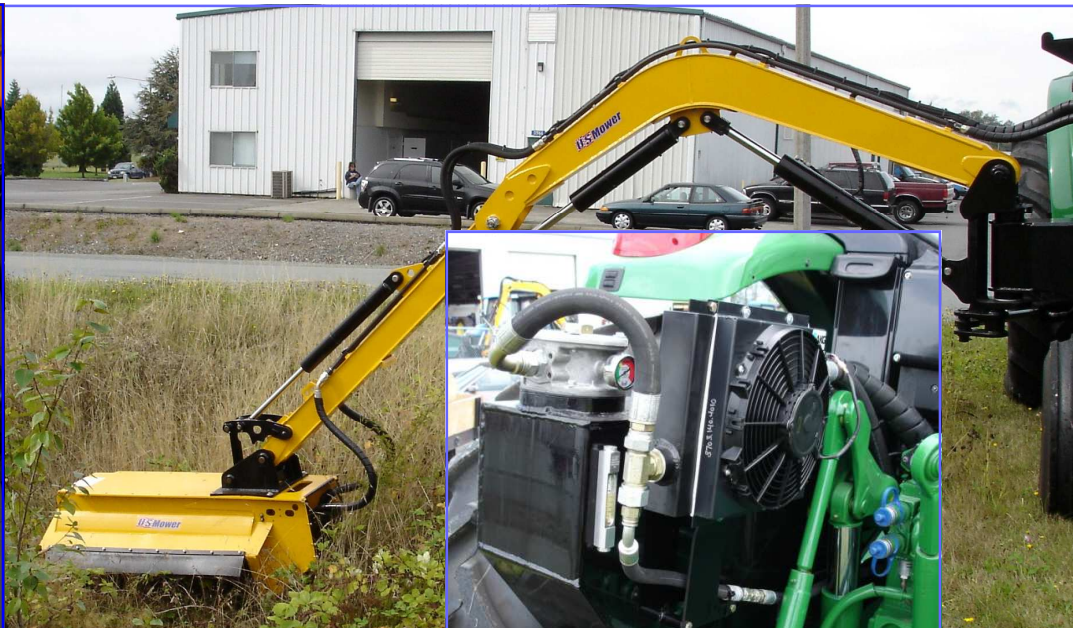


Made in the
USA

US Mower
Creating Mowing Solutions

11949 Westar Lane
Burlington, WA 98233
877-757-7555
Fax: 360-757-7567
info@usmower.com
www.usmower.com



Optional Electronic Joystick

Standard 55,000 BTU Cooler w/ Fan

Direct Drive, No Belts



Mows within 6" of Tire

Made in the
USA



11949 Westar Lane
Burlington, WA 98233
877-757-7555
Fax: 360-757-7567
info@usmower.com
www.usmower.com

◆ **125MM22-50HDRBF** **Standard Heavy Duty Rear Cradle Boom w/ 50" HD Brush Flail Mower**

- ◆ Primary Excavator Style Boom 10" x 7" DOMEX 100,000 PSI Yield Strength Steel
- ◆ Secondary Dipper Boom 6.75" x 6" DOMEX 100,000 PSI Yield Strength Steel
- ◆ Rear Cradle Boom Storage: Standard
- ◆ Horizontal Boom Reach from Tractor Center Line: 22' 7"
- ◆ Minimum Reach Mower Head to Right Rear Tire: 6"
- ◆ Approximate Operating Weight Less Ballasting: 4,239 Lbs.
- ◆ USM Custom MFG Wheel Weight: 30" Rim 1,963 Lbs. • 34" Rim 2462 Lbs. • 38" Rim 2962 Lbs.
- ◆ Sugar Beat Juice Liquid Ballast Added @ Factory: 30" Wheel 953 Lbs. • 34" Wheel 1070 Lbs.
- ◆ Boom and Mower Head in Stowed Position Meets 102" DOT Legal Width: Standard
- ◆ Single Gear Hydraulic Pump 40.0 GPM @ 1800 RPM
- ◆ 'Jaw Coupler' Pump Coupling, No Lubrication Required Standard
- ◆ Tuck-A-Way 25 Gallon Hydraulic Tank, Provides Clear Operator Sight: Standard
- ◆ 55,000 BTU Oil Cooler w/ Fan Attached to Hydraulic Tank: Standard
- ◆ Electronic Joystick Control: Optional
- ◆ Full Rotation Mowing Arc from Rear Cradle Stow Position: 125 °
- ◆ Polyester Powder Coat Finish, High Visibility Yellow: Standard
- ◆ Vegetation Cutting Capacity: 6"
- ◆ 12 Months Full Warranty: Standard

Excavator Style Boom

